

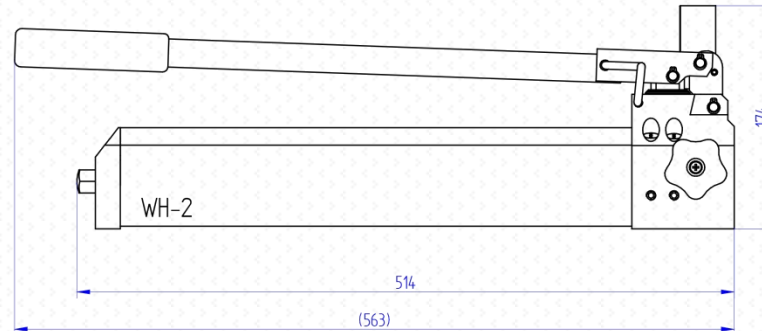
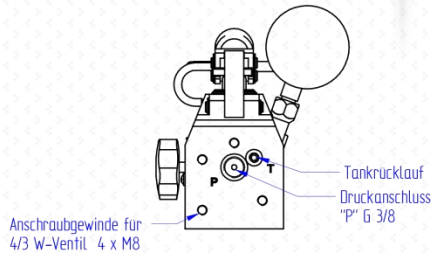
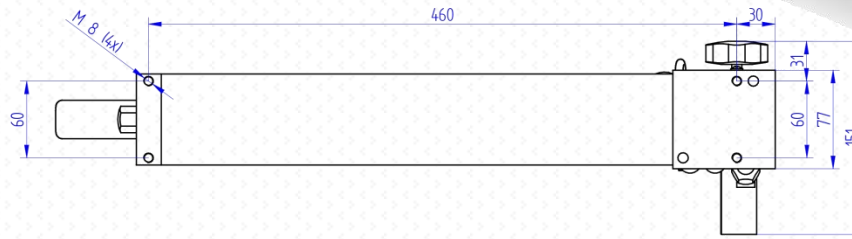
# WH-2

## 700 Bar

### Double Speed Hydraulic Hand Pumps



- Working pressure 700 bar max
- Double acting, double speed operation
- Pump head and tank made of aluminium
- Compact, lightweight ergonomic design
- 1000 Bar Ø63 gauge as standard available
- Internal pressure relief valve for overload protection
- Double acting available with WV4/3 way control valve
- Made in Germany with CE Mark and ISO9001 certified



Model	WH-2	
Reservoir Capacity	cm <sup>3</sup>	1.300
Usable Oil Capacity	cm <sup>3</sup>	900
Oil Displacement per stroke	cm <sup>3</sup>	17 / 1,7
Maximum Handle Effort at 700 bar	kg	47
Piston stroke	mm	32 / 10
Piston Diameter	mm	23
Oil Port Thread	NPT	3/8"
Weight incl. Oil	kg	5,3
Sizes (E x B x C)	mm	563 x 151 x 174

**Surkon Makina Sanayi Ticaret Limited Şirketi**

İvedik Org. San. Bölgesi - Özpetek Sanayi Sitesi 1390 Sokak.- No: 12 – TR-06378 – Yenimahalle / ANKARA Tel: (0 312) 386 14 64 / Faks: (0 312) 386 14 88  
e-mail : eposta@surkon.com [www.surkonmakina.com](http://www.surkonmakina.com)

**SURKON**<sup>®</sup>  
INTERNATIONAL